

Light efficiency:

44 Lumen/Watt

Light quality:

CRI: 86.0

Color temperature:

15921 K

Output: 4648 lm

Peak: 2730 cd

Power: 105.5 W

PF: 0.99



Tracking number: [n/a](#)

Product name:

JoltBar FXIP

Item number:

CRI

Date and time:

4/17/2024 11:03:09 AM

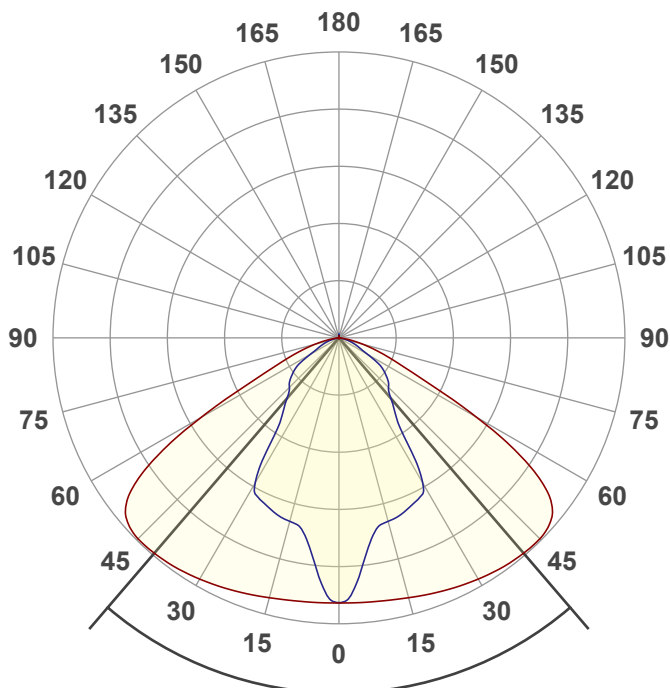
Description:

R @ 79

G @ 232

B @ 109

W @ 23



Beam angle

81.2°

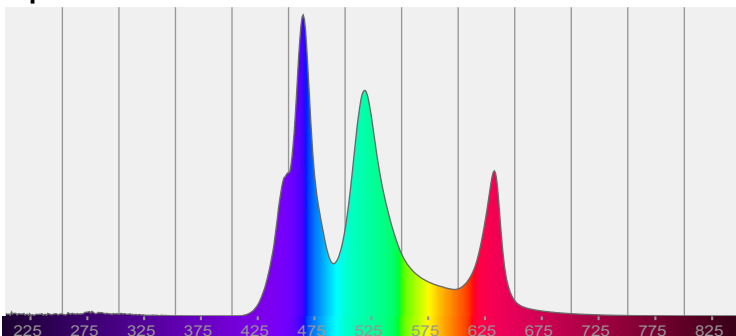


CIE 1931

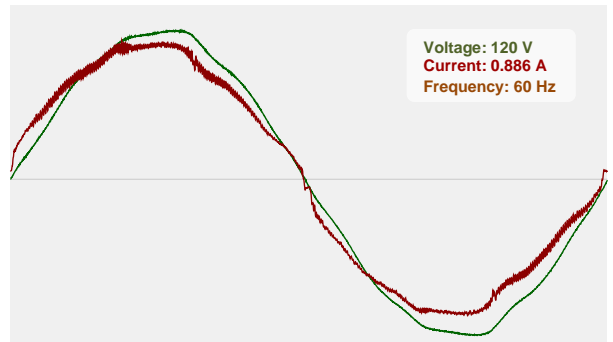
x: 0.234

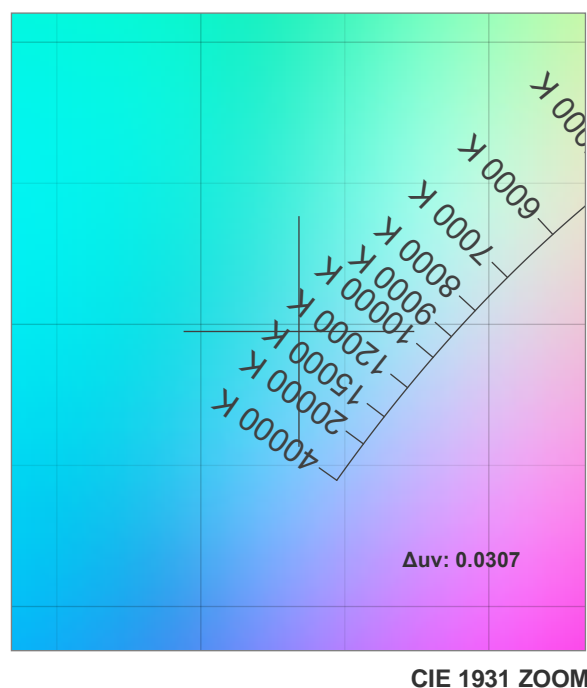
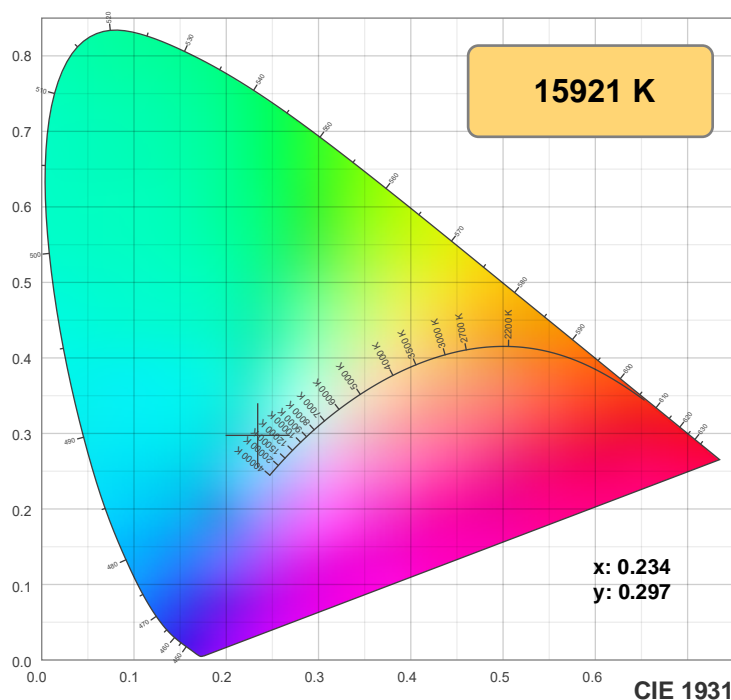
y: 0.297

Spectra



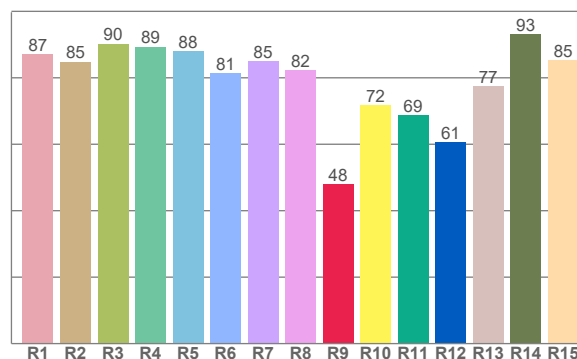
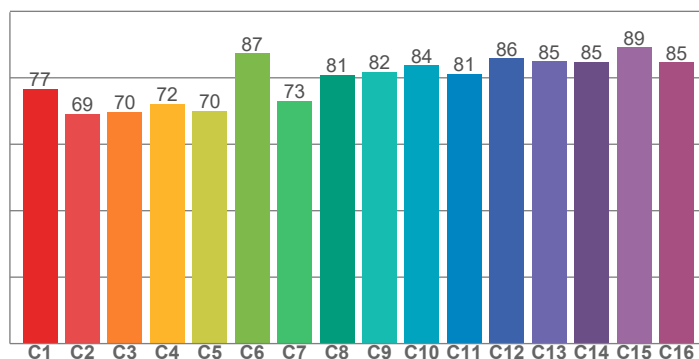
Power





TM-30: 79.2

CRI: 86.0 (R1-R8)



CRI R values, only R1-R8 are used to calculate final CRI value

R1	R2	R3	R4	R5	R6	R7	R8	R9	R10	R11	R12	R13	R14	R15
87.0	84.8	90.2	89.3	87.9	81.3	84.9	82.3	48.0	71.8	68.7	60.5	77.4	93.1	85.3

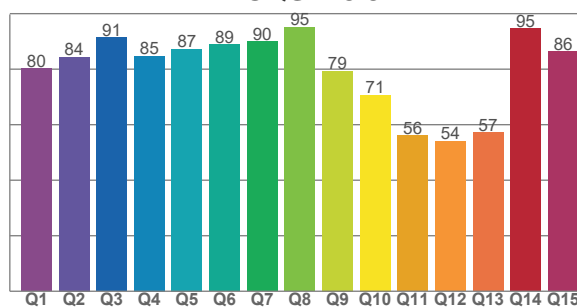
TM30 C values, 16 binned values out of total of 99 C values

C1	C2	C3	C4	C5	C6	C7	C8	C9	C10	C11	C12	C13	C14	C15	C16
76.7	69.1	69.7	72.2	70.0	87.3	73.0	81.0	81.7	83.8	81.2	85.8	85.0	84.8	89.1	84.7

CQS Q values

Q1	Q2	Q3	Q4	Q5	Q6	Q7	Q8	Q9	Q10	Q11	Q12	Q13	Q14	Q15
80.2	84.4	91.4	84.7	87.2	88.9	89.9	95.1	79.3	70.7	56.0	54.0	57.2	94.6	86.3

CQS: 75.9



Color parameters

Color temperature	Color rendering index	Red component	Color fidelity	Color gamut	Color quality scale	Color coordinate cie 1931	Color coordinate cie 1931	Color coordinate	Color coordinate	Color deviation from black body
CCT	CRI	CRI R9	TM30 Rf	TM30 Rg	CQS	x	y	u	v	Δuv
15921 K	86.0	48.0	79.2	94.0	75.9	0.234	0.297	0.153	0.293	0.0307

TM-30 details

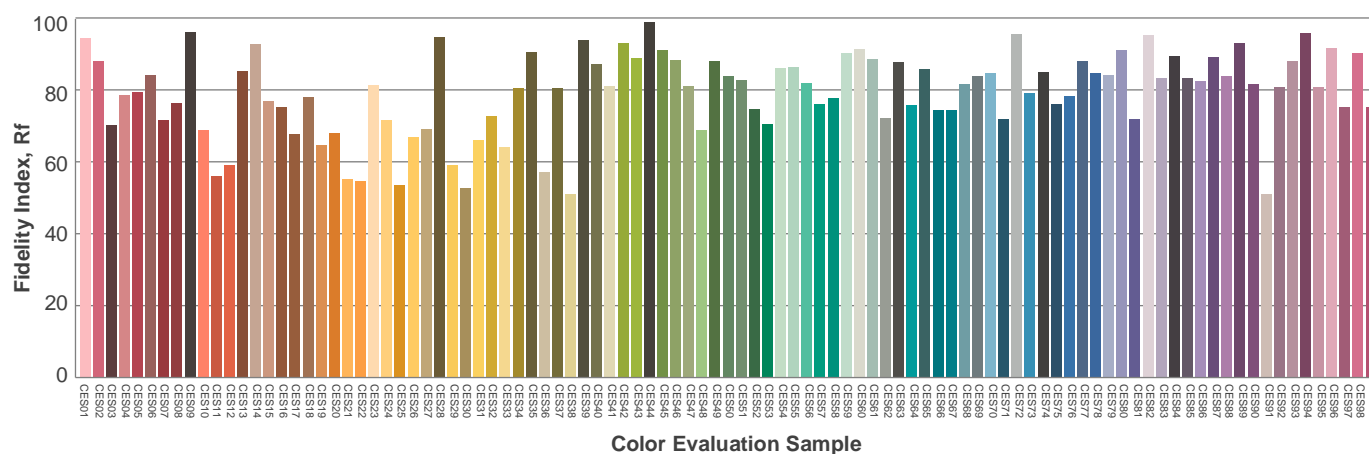
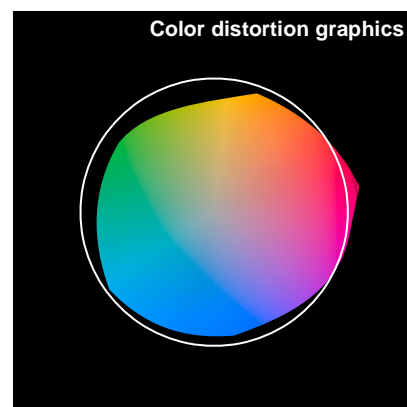
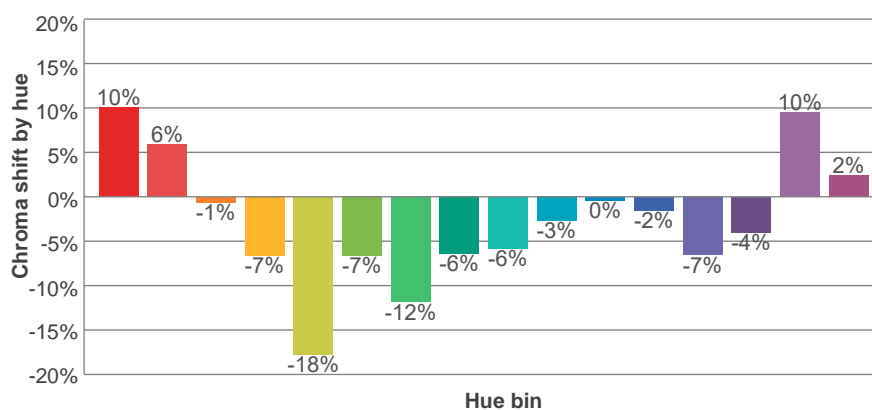
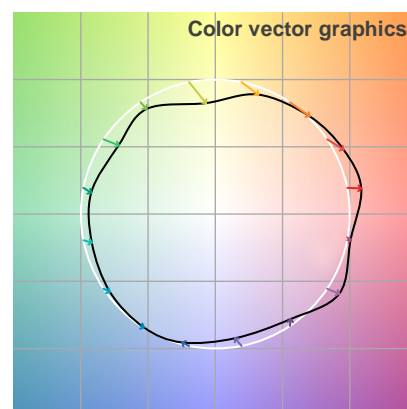
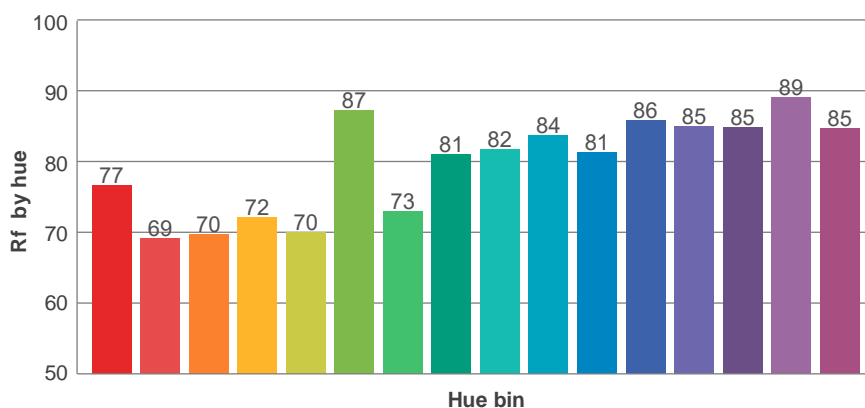
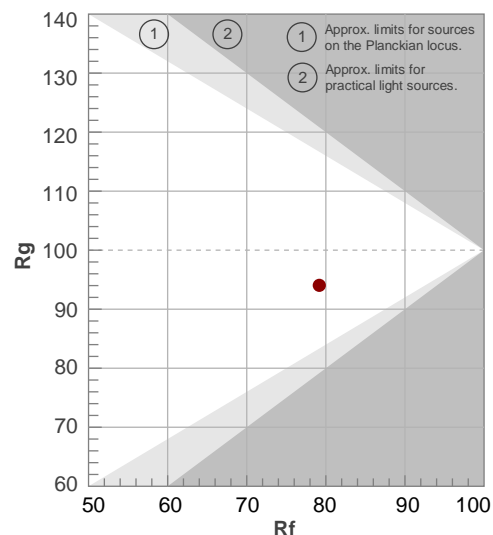
Rf 79.2

Fidelity index Rf

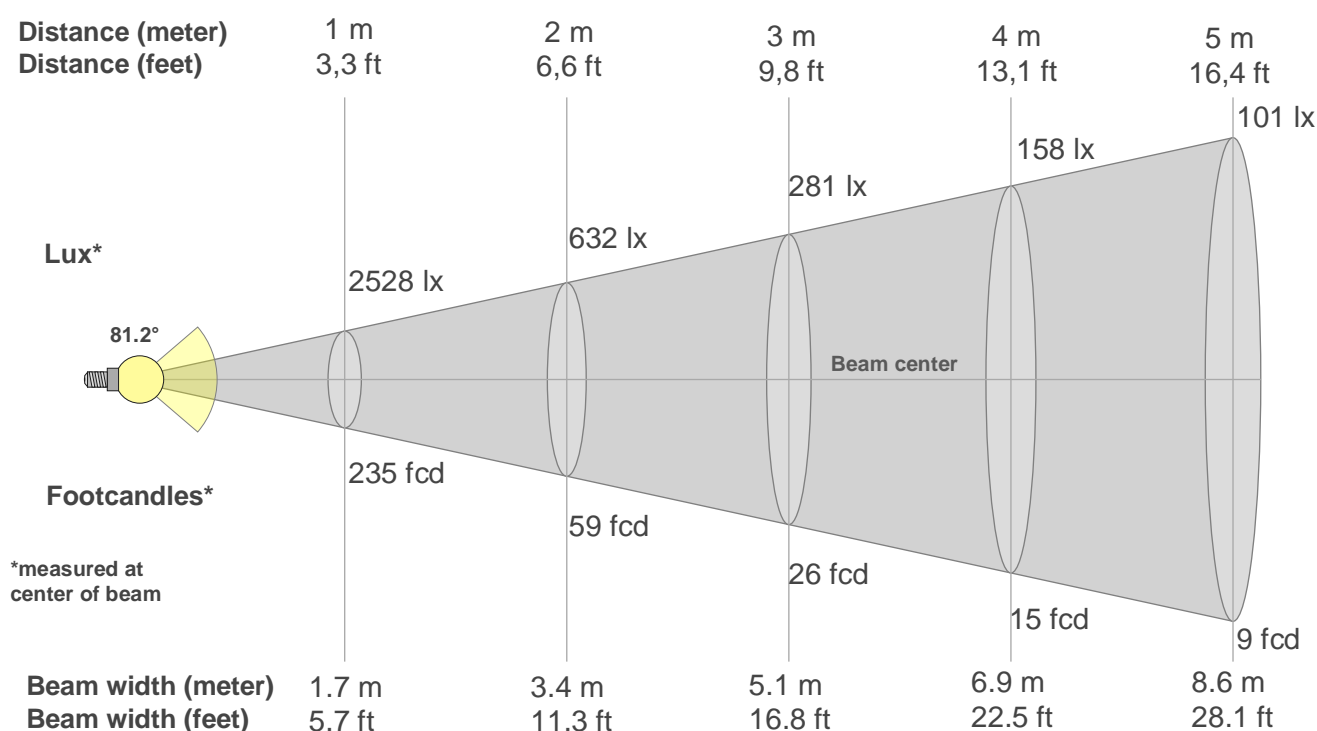
Rg 94.0

Gamut index Rg

Hue Bin	Ri	Shifts (%)	
		Chroma	Hue
1	77	10%	-3%
2	69	6%	-13%
3	70	-1%	-18%
4	72	-7%	-14%
5	70	-18%	-9%
6	87	-7%	-1%
7	73	-12%	-3%
8	81	-6%	2%
9	82	-6%	3%
10	84	-3%	5%
11	81	0%	3%
12	86	-2%	-6%
13	85	-7%	-4%
14	85	-4%	3%
15	89	10%	2%
16	85	2%	1%



Beam details



Beam intensities from 1-20m

1m	2m	3m	4m	5m	6m	7m	8m	9m	10m	11m	12m	13m	14m	15m	16m	17m	18m	19m	20m
3.3ft	6.6ft	9.8ft	13.1ft	16.4ft	19.7ft	23ft	26.2ft	29.5ft	32.8ft	36.1ft	39.4ft	42.7ft	45.9ft	49.2ft	52.5ft	55.8ft	59.1ft	62.3ft	65.6ft
2528lx	632lx	281lx	158lx	101lx	70lx	52lx	40lx	31lx	25lx	21lx	18lx	15lx	13lx	11lx	10lx	9lx	8lx	7lx	6lx
234.9fcd	58.7fcd	26.1fcd	14.7fcd	9.4fcd	6.5fcd	4.8fcd	3.7fcd	2.9fcd	2.3fcd	1.9fcd	1.6fcd	1.4fcd	1.2fcd	1fcd	0.9fcd	0.8fcd	0.7fcd	0.7fcd	0.6fcd

Intensities in 0° c-plane

0°	5°	10°	15°	20°	25°	30°	35°	40°	45°	50°	55°	60°	65°	70°	75°	80°	85°	90°	95°
2528	2552	2563	2585	2614	2645	2676	2704	2723	2728	2664	2332	1536	769	447	242	96	15	0	0
100%	101%	101%	102%	103%	105%	106%	107%	108%	108%	105%	92%	61%	30%	18%	10%	4%	1%	0%	0%

Intensities in 90° c-plane

0°	5°	10°	15°	20°	25°	30°	35°	40°	45°	50°	55°	60°	65°	70°	75°	80°	85°	90°	95°
2528	2284	1923	1825	1791	1737	1591	1000	790	674	606	505	325	208	139	76	9	0	0	0
100%	90%	76%	72%	71%	69%	63%	40%	31%	27%	24%	20%	13%	8%	6%	3%	0%	0%	0%	0%

Intensities in 180° c-plane

0°	5°	10°	15°	20°	25°	30°	35°	40°	45°	50°	55°	60°	65°	70°	75°	80°	85°	90°	95°
2528	2552	2563	2585	2614	2645	2676	2704	2723	2728	2664	2332	1536	769	447	242	96	15	0	0
100%	101%	101%	102%	103%	105%	106%	107%	108%	108%	105%	92%	61%	30%	18%	10%	4%	1%	0%	0%

Intensities in 270° c-plane

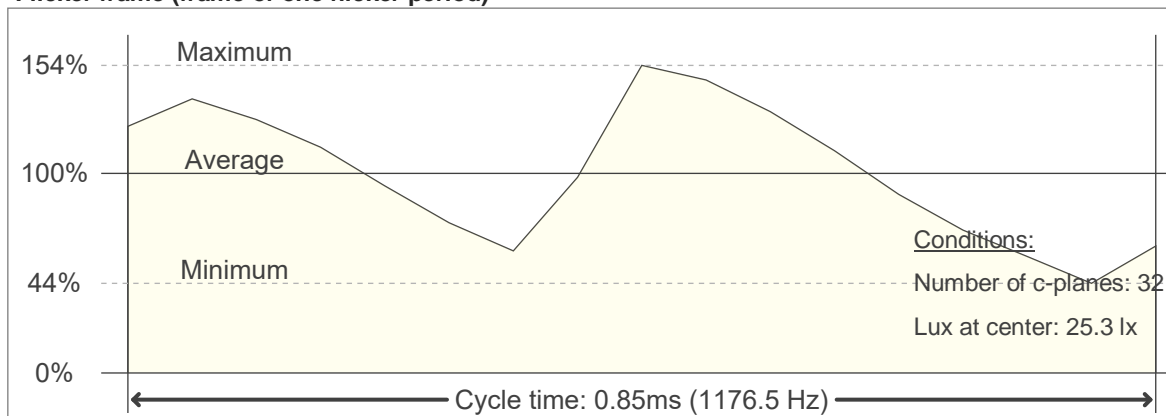
0°	5°	10°	15°	20°	25°	30°	35°	40°	45°	50°	55°	60°	65°	70°	75°	80°	85°	90°	95°
2528	2284	1923	1825	1791	1737	1591	1000	790	674	606	505	325	208	139	76	9	0	0	0
100%	90%	76%	72%	71%	69%	63%	40%	31%	27%	24%	20%	13%	8%	6%	3%	0%	0%	0%	0%

Beam angle 50%	Field angle 10%	Cutoff angle 2,5%	Intensity ratio in 120° cone	Intensity ratio in 90° cone
81.2°	136.1°	155.8°	88.7%	66.0%

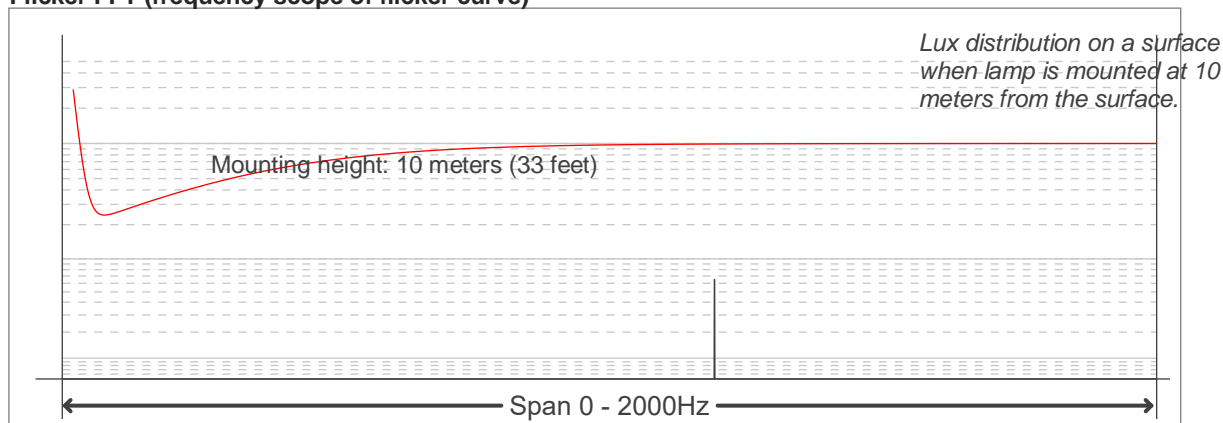
Flicker

Flicker curve (complete sampled flicker signal)

Flicker frame (frame of one flicker period)



Flicker FFT (frequency scope of flicker curve)



Flicker results:

Flicker frequency:		1176.47 Hz	
Flicker index:	0.14	JA8/10 40Hz	0.27 %
Flicker percentage:	61.31 %	JA8/10 90Hz	0.57 %
SVM: (Visual flicker)	0.13	JA8/10 200Hz	1.15 %
PstLM	0.03	JA8/10 400Hz	2.3 %
Mp	0.05	JA8/10 1000Hz	6.15 %

Flicker conditions:

Sample rate:	20000 samples/second
--------------	----------------------